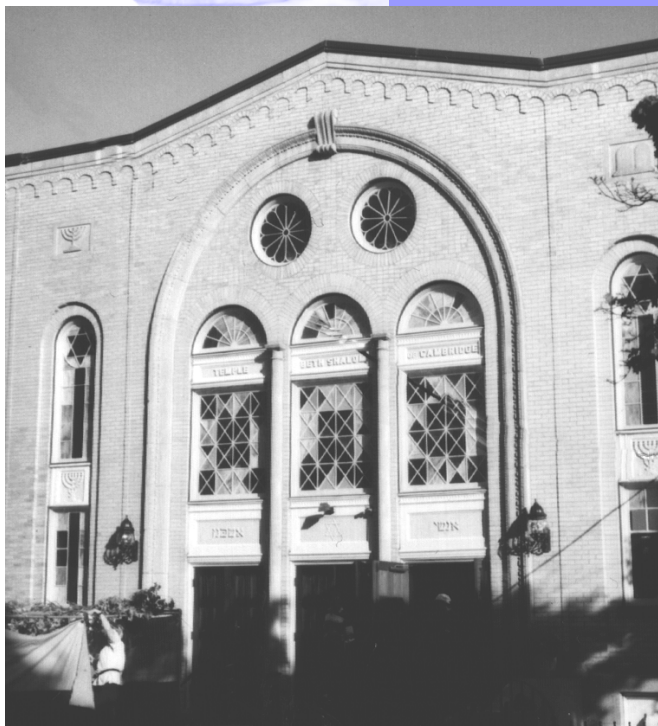




Temple Beth Shalom of Cambridge

*A Jewish
Presence in
Cambridge
Since 1898*



8 Tremont Street
Cambridge, MA 02139
(617) 864-6388

www.tremontstreetshul.org

About Temple Beth Shalom

Known to most Cambridge residents as “the Tremont Street Shul,” Temple Beth Shalom—the oldest synagogue in Cambridge—identifies with Jewish tradition in a unique way. We integrate the traditional and progressive by maintaining the traditional service in Hebrew and bringing current views to bear in thoughtful discussions about the service, the weekly Torah portion, and Judaism. We emphasize the eternal values of worship, study, relationship to God, and relationships among people in a warm, accepting environment that allows each person to participate in whatever way feels most comfortable.

We welcome the diversity of our members, who come from many backgrounds and a wide range of Jewish observance, and emphasize the importance of helping everyone feel included and treating each person with respect.

What We Offer

TBS offers a wide range of programs appealing to a diverse community. Our programs include regular religious services, children’s services, family programs, activities for young adults (ages 20-40), community dinners, adult and family education, and ongoing activities with the Muslim community in Cambridge.

We extend a warm welcome to all newcomers and guests. Please join us for our famous sit-down Kiddush following the Shabbat morning service so that we can greet you personally. Our congregation is small and evolving, and each individual has a significant impact. We welcome everyone’s participation and involvement.



Like an extended Jewish family, Temple Beth Shalom is a multigenerational, “hey mish” (homelike, warm) community with a traditional core.

Our History



Over the past century, as members of the original Cambridge Jewish community migrated to the suburbs, the synagogues in Cambridge consolidated in stages. Temple Beth Shalom was formed when Temple Ashkenaz and Congregation Beth Israel merged in 1962. The merged shul chose to use the Temple Ashkenaz building because it was newer. The name was changed to Beth Shalom (“House of Peace”), in part to mark a new spirit of community cooperation.

Simchat Torah and TBS

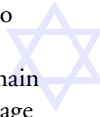
Ask anyone in Cambridge (or beyond) about the Tremont Street Shul, and chances are you’ll hear, “Oh, that’s where they do the big Simchat Torah celebration!”

As the last of the original Cambridge shuls to remain in operation, TBS is the proud repository of a total of 11 Torah scrolls, making us a natural focal point for the festive holiday of Simchat Torah, “Rejoicing in the Torah.” In the 1970s, several local colleges decided to hold a joint Simchat Torah celebration at TBS. Helped by the legendary success of this

annual event, TBS began to attract new members from the young professionals, artists, and writers in the greater Cambridge area and has grown steadily since then. Students seeking a cross-generational community synagogue have also joined our family.

The Building

Constructed in 1924, our historic building underwent a major renovation in 1987, remodeling the basement vestry to house the Alef-Bet Child Care Center. A second renovation in 1994 transformed our balcony into a convertible classroom. Meticulous care was taken during each renovation to conserve the building’s historic character. Our main sanctuary (pictured on page 7) is one of the Jewish architectural jewels of the greater Boston area. Come and see it for yourself!



“There’s no place like Temple Beth Shalom!”





Religious Services

*“Come more often,
bring more friends!”*

Saturday Mornings

On Saturday mornings, two minyans hold services at 9:30 a.m.: Egalitarian, in which men and women participate equally in leading the service, and Traditional. One service takes place in the main sanctuary, the other downstairs in the vestry. Both minyans follow the traditional *siddur* (prayerbook), in Hebrew, and offer both mixed seating and gender-separated seating.

After the Torah service is completed, the two minyans join together in the main sanctuary for the Musaf service. A sit-down luncheon kiddush follows Shabbat morning services. Everyone is

encouraged to join us for this cherished community time.

Friday Nights

An egalitarian Kabbalat Shabbat service is held each Friday evening at 6:30 p.m.

About every other month we hold a Community Shabbat Dinner; on these occasions, services begin at 6 p.m. in the main sanctuary, with dinner downstairs immediately following. Pre-registration is necessary for these events. Call for information on the next scheduled Community Dinner.

Weekdays

Traditional weekday morning services are held on Sunday at 8:30 a.m. (followed by breakfast) and on Monday, Thursday, and Rosh Chodesh at 7:00 a.m.

High Holidays

Rosh Hashanah and Yom Kippur are times when the whole community joins together for reflection and renewal. We have High Holiday tickets available for non-members and visitors. Call the synagogue office for information: (617) 864-6388.

Purim festivities, including our annual Purimshpiel, engage members of all ages.



Our Community



Our membership demographics reflect our position as an element of the thriving urban center and intellectual mecca that is Cambridge. Members range from newborns to nonagenarians—including many young couples and families, undergraduates and graduate students.

Looking Within: The Shul Community

Temple Beth Shalom is an extended family of sorts. We share one another's sorrows and joys, and want to know when special attention is needed by a member of our community. The members of the Chesed Committee visit the sick, send Shabbat dinners to welcome new babies, and are available to provide any necessary assistance. (If you know of someone who needs

our "loving-kindness," please notify the synagogue office.)

Looking Without: The Greater Community

Meanwhile, the Social Action Committee—in the great tradition of Judaism—works for political and social improvement in the community at large. In this context, we help staff the food pantry at the Margaret Fuller Neighborhood House in Cambridge one night a week, work with local homeless shelters, and organize ongoing study circles and joint community service activities with the Muslim community in Cambridge.



Temple Beth Shalom sees itself as committed to tikkun olam—repairing the world.



Programming & Activities

Young Adult Activities

The Tremont Street 20s&30s hold activities throughout the year. Regular events include Shabbat dinners, summer barbecues, movie nights, weeknight “Dine & Discuss” gatherings, and much more. Check out our events calendar online at <http://20s30s.tremontstreetshul.org>.



Children's Programming

Children are an important part of our community. We welcome children to all our services and are comfortable with their moving around. We want them and their parents to relax and feel at home.

Children's Services. One service for toddlers and another for school-age children are held Saturday mornings at 11:00 a.m., on the second floor.

Alef-Bet Child Care Center. TBS is home to this Jewish-oriented child care program for

children ages 15 months to 5 years. It is designed to provide both Jewish and secular programming as well as to address the child care needs of busy families. Priority is given to members of TBS. For information or to schedule a visit, please call Director Judi Zalles at (617) 547-3651.

Educational Programming

TBS encourages a spirit of inquiry and lifelong learning among all our members. Accordingly, we offer lectures, classes, and other educational opportunities throughout the year. Our Tuesday night Talmud class welcomes students at all levels, men and women, from beginners to advanced. We regularly try to offer a Torah reading class and an Introduction to the Siddur [prayerbook] class. Other classes address aspects of Jewish worship, Jewish texts and philosophy, and issues of concern to modern American Jews. Special guest lecturers have included Rabbi Moshe Waldoks; noted lawyer, author, and Harvard professor Alan Dershowitz; Harvard professor and leading African-American scholar Cornel West; and many others.

Joining Temple Beth Shalom

TBS has three categories of membership: individual, family, and student. Family memberships include two High Holiday tickets. Individual and student memberships include one High Holiday ticket. New members enjoy discounted dues for their first year of membership. We also have a **Friends of TBS** program for people outside the greater Cambridge area.

All members and Friends receive a subscription to our newsletter, the *Ausblick*, published approximately four times a year. The *Ausblick* contains a worship schedule and calendar of activities for each month, some words of Torah, and updates on all the goings-on around TBS. We also send out weekly announcements by e-mail; to



The main sanctuary of Temple Beth Shalom, pictured here with the traditional chuppah or wedding canopy.

subscribe to this mailing list, visit our web site:

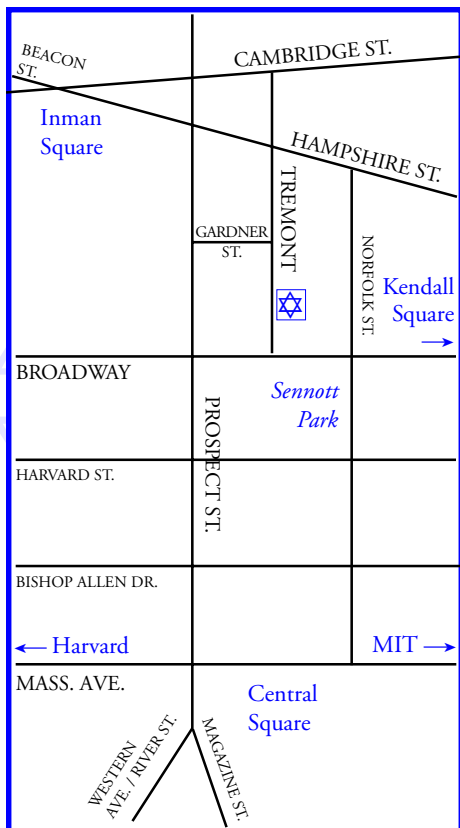
www.tremontstreetshul.org.

Join us and help build Jewish community in one of the world's most important intellectual centers! Our dues are very reasonable, and we can negotiate dues for those who request it. For information and a membership application, contact the synagogue office at (617) 864-6388, or e-mail **office@tremontstreetshul.org**.



Our beloved rabbi and rebbeztzin for over 45 years, Reb Moshe z"l and Freda Holcer.

How to Find Us



Temple Beth Shalom is located in Cambridge, Massachusetts at 8 Tremont Street, between Central and Inman Squares. Tremont Street is one block east of

Prospect Street, between Broadway and Hampshire Streets (see inset map). Walking takes approximately 10 minutes from Central Square, 15 minutes from Kendall Square, and 20-25 minutes from Harvard Square. MBTA bus routes that run very near the shul include the 69, 83, and 91.

Parking on Tremont Street itself is restricted (except on Sundays) to Cambridge residents with a sticker. Also beware of the posted monthly street cleaning days—they tow 100% of the time! Parking is available on Broadway, on Norfolk Street (along the park), on Hampshire Street, and in public parking lots off Massachusetts Avenue and Kendall Square.

Accessibility. People who have difficulty with stairs can enter our main sanctuary by using the wheelchair ramp to the left of the front entrance. (We regret that we do not currently have a wheelchair-accessible restroom.)

Please visit us soon. We'll be glad to have you with us! ☆

If you're more interested in a virtual visit, browse our Web site: www.tremontstreetshul.org